

NOTES:

1. INTERPRET CALLOUTS/SYMBOLS PER ASMEI Y14.5M-1994
2. RECOMMENDED MATING CONNECTOR TORQUE IS 8 lb-in (90 N-cm) DO NOT EXCEED 12 lb-in (136 N-cm) AS DAMAGE TO CONNECTOR MAY RESULT.
3. VERIFICATION OF CHARACTERISTICS ARE IN REFERENCE WITH MIL-DTL-3928.
4. THIS RELAY IS RoHS COMPLIANT.

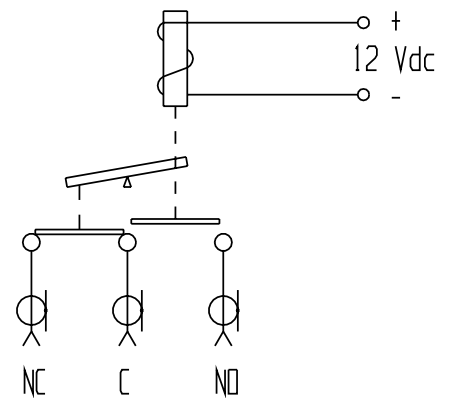
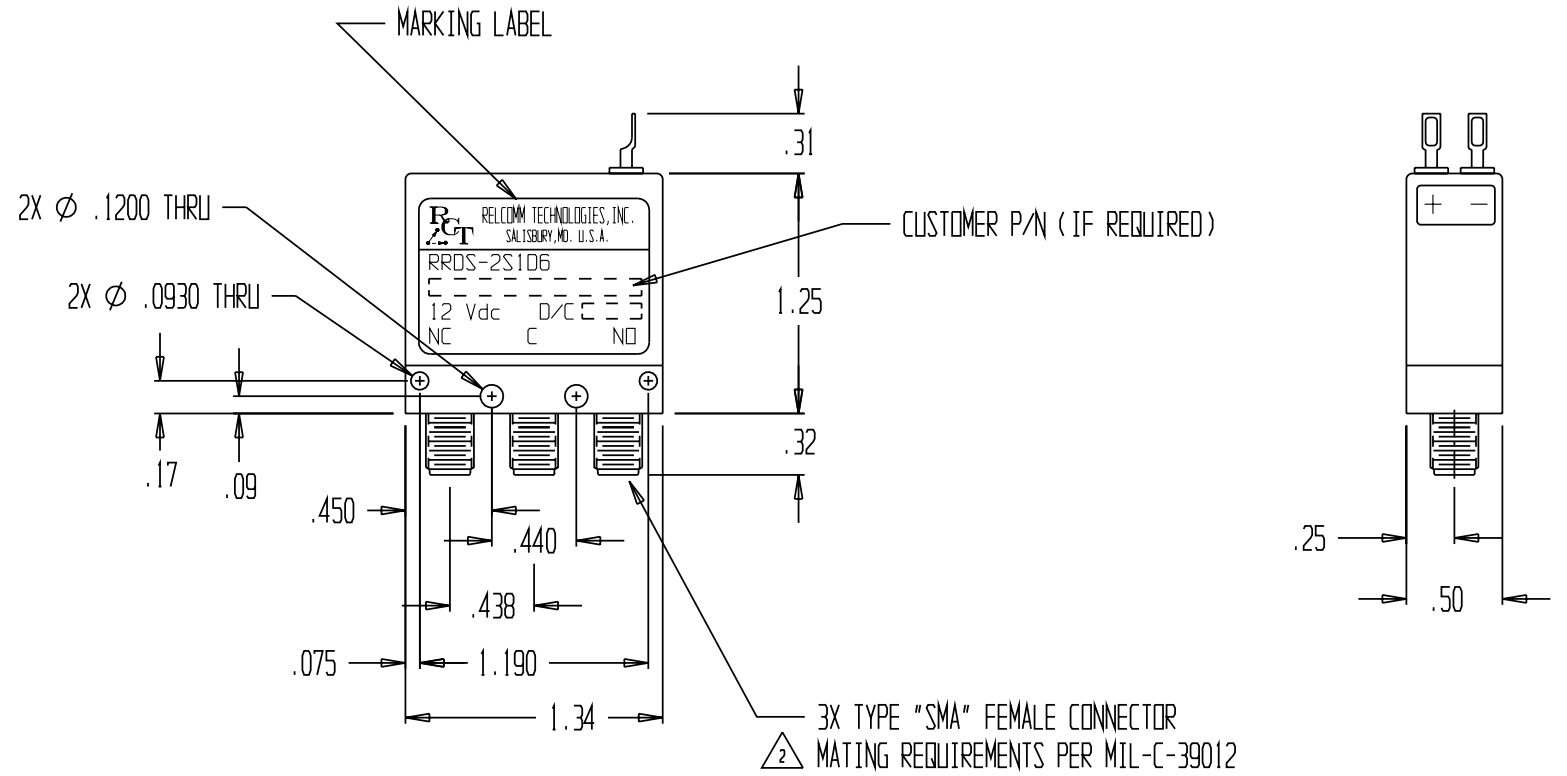
CHARACTERISTICS:

| | | | | |
|---------------------------------|--------|--------|--------|--------|
| NOMINAL IMPEDANCE (OHM) ----- | 50 | | | |
| FREQUENCY RANGE (GHz) ----- | DC-1 | 1-2 | 2-4 | 4-6 |
| V.S.W.R. (MAX) ----- | 1.10:1 | 1.15:1 | 1.20:1 | 1.30:1 |
| INSERTION LOSS (dB MAX) ----- | 0.10 | 0.15 | 0.20 | 0.30 |
| ISOLATION (dB MIN) ----- | 80 | 80 | 80 | 70 |
| AVERAGE POWER (WATTS TYP) ----- | 180 | 120 | 85 | 60 |

| | |
|----------------------------------|----------------------------|
| TEMPERATURE RANGE (OPERATING) -- | -40°C - +85°C |
| TEMPERATURE RANGE (STORAGE) ---- | -65°C - +110°C |
| SWITCHING ACTION ----- | BREAK BEFORE MAKE |
| OPERATING VOLTAGE (OVER TEMP) -- | 10 - 14 Vdc |
| PICKUP VOLTAGE (MAX @ 25°C) ---- | 9 Vdc |
| DROPOUT VOLTAGE ----- | > 1.5 Vdc |
| ACTUATING CURRENT (MA MAX) ---- | 190 @ 12 Vdc & 25°C |
| SWITCHING TIME (MAX) ----- | 15 mSEC |
| LIFE (MIN PER POSITION)----- | 1 * 10 ⁶ CYCLES |
| WEIGHT (OZ) ----- | 1.0 NOM |

MATERIALS/FINISH:

| | |
|-----------------|---------------------------|
| HOUSING ----- | ALUMINUM/NICKEL |
| COVER ----- | ALUMINUM/BLACK ANODIZED |
| CONNECTORS --- | STAINLESS STEEL/PASSIVATE |
| INSULATION --- | TEFLON |
| CONTACTS ----- | BERYLLIUM COPPER/GOLD |
| TERMINALS ----- | Ni-Fe/Sn-PLATED |



SCHEMATIC SHOWN IN DE-ENERGIZED POSITION

| | | | | | | | | |
|-----|---------------|----------|----------|---|--|---|-------------------------------------|--------------|
| | | | | UNLESS OTHERWISE SPECIFIED: DIMENSIONS ARE IN INCHES AND INCLUDE PLATING. TOLERANCES .XX ±.02 FRACTIONS ± .XXX ±.010 SURFACE QUALITY .XXXX ±.0050 63/ MAX | DR B. JONES 10/22/08 CK B. JONES ENG M. MAGDA MFG QA | <p>RELCOMM TECHNOLOGIES, INC. 610 BEAM STREET SALISBURY, MARYLAND 21801</p> | | |
| | | | | THIRD ANGLE PROJECTION | THIS DRAWING AND SPECIFICATIONS ARE THE PROPERTY OF RELCOMM TECHNOLOGIES AND SHALL NOT BE REPRODUCED OR COPIED OR USED IN WHOLE OR IN PART AS THE BASIS FOR THE MANUFACTURE OR SALE OF ITEMS WITHOUT WRITTEN PERMISSION. | | TITLE COAXIAL 1P2T RELAY "FAILSAFE" | |
| - | PROD. RELEASE | 10/24/08 | B. JONES | | | SIZE B | DWG NO. RRDS-2S106 | REV - |
| REV | ECN NO. | DATE | APPROVAL | | | SCALE 1 : 1 | DO NOT SCALE DWG | SHEET 1 OF 1 |